

# LUK Employee Benefits

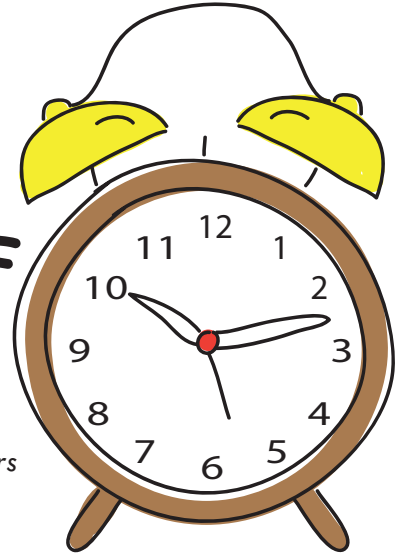
For more information about specific benefits or how to take advantage, contact [HR@LUK.org](mailto:HR@LUK.org)

## health



- Family & Individual Health Insurance (BCBS)
- Free Individual Dental Insurance
- **NO WAIT PERIOD FOR HEALTH INSURANCE**
- Flexible Spending Account and Health Savings Account
- Health Reimbursement Arrangement Plan

## TIME OFF



- 12 Holidays
- 6 Personal/Sick Days
- 16 Employee Community Engagement Volunteer Hours
- Generous Vacation Plan Based on Length of Employment, Starting at 3 Weeks for New FT Hires

## EDUCATION



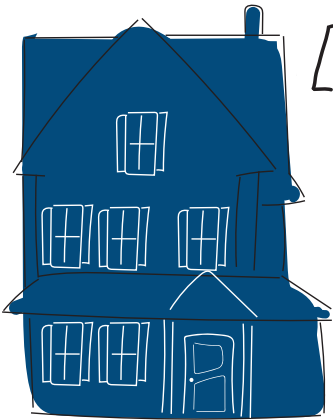
- 25% off tuition at Assumption University
- 10% off tuition at Fitchburg State University
- Reimbursement for educational expenses (up to \$1,000 annually)
- Learning opportunities and CEUs

## RETIREMENT



- Retirement Planning
- 403B Retirement Plan
- 401A for Eligible Employees (2+ Years)

## AT THE OFFICE



- Free Parking
- Flexible Work Schedules and Remote Access Opportunities
- High-quality, Individualized Supervision
- Unique Work Environment
- Opportunity for Meaningful Work
- Annual Salary Adjustments
- Mileage Reimbursement
- Annual Employee Appreciation Celebration
- Employee Anniversary Gifts

## OTHER

- Free Family Account for Password Manager (1Password)
- Long-Term Disability
- Employee Assistance Plan
- Free Individual Life Insurance (1.5x Annual Salary)

- Free Admission to the Fitchburg Art Museum
- Public Service Loan Forgiveness (PSLF) Eligibility
- AAA
- Small, Interest-Free Personal Loan (Axuda)
- Option for Group Voluntary Term Life Insurance Coverage

