

# LUK Employee Benefits

For more information about specific benefits or how to take advantage, contact [HR@LUK.org](mailto:HR@LUK.org)

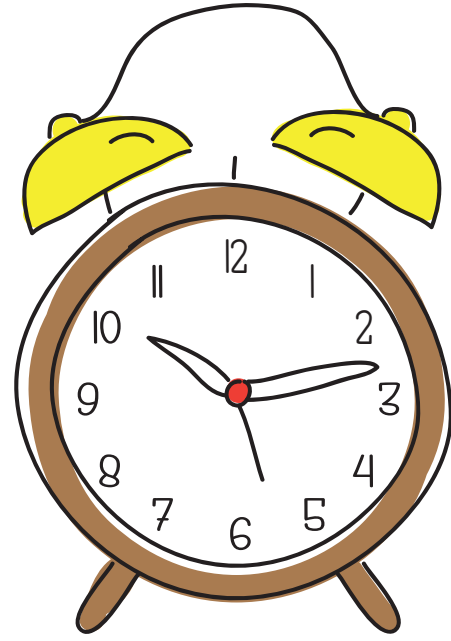
## health



- FAMILY & INDIVIDUAL HEALTH INSURANCE (BCBS)
- FREE INDIVIDUAL DENTAL INSURANCE
- NO WAIT PERIOD FOR HEALTH INSURANCE
- FSA/HSA

## TIME OFF

- 12 HOLIDAYS
- 6 PERSONAL/SICK DAYS
- 16 EMPLOYEE COMMUNITY ENGAGEMENT VOLUNTEER HOURS
- GENEROUS VACATION PLAN BASED ON LENGTH OF EMPLOYMENT



## EDUCATION



- 25% OFF TUITION AT ASSUMPTION
- REIMBURSEMENT FOR EDUCATIONAL EXPENSES (UP TO \$1,000)
- LEARNING OPPORTUNITIES + CEUs

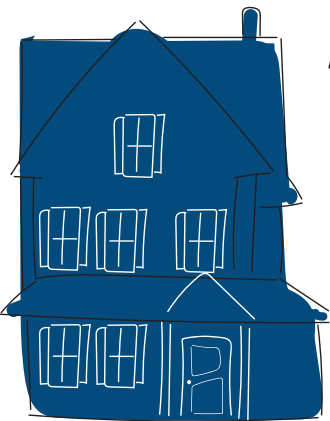
## RETIREMENT



## AT THE OFFICE

- FREE PARKING
- FLEXIBLE WORK SCHEDULES + REMOTE ACCESS OPPORTUNITIES
- HIGH-QUALITY, INDIVIDUALIZED SUPERVISION
- UNIQUE WORK ENVIRONMENT
- OPPORTUNITY FOR MEANINGFUL WORK
- ANNUAL SALARY ADJUSTMENTS
- MILEAGE REIMBURSEMENT
- ANNUAL EMPLOYEE APPRECIATION CELEBRATION
- EMPLOYEE ANNIVERSARY GIFTS

- RETIREMENT PLANNING
- 403B RETIREMENT PLAN
- 401A FOR ELIGIBLE EMPLOYEES (2+ YEARS)



## OTHER

- FREE FAMILY ACCOUNT FOR PASSWORD MANAGER (IPASSWORD)
- LONG-TERM DISABILITY
- EMPLOYEE ASSISTANCE PLAN
- FREE INDIVIDUAL LIFE INSURANCE (1.5X ANNUAL SALARY)
- FREE ADMISSION TO THE FITCHBURG ART MUSEUM
- PSLF ELIGIBILITY
- AAA
- SMALL, INTEREST-FREE PERSONAL LOAN (AXUDA)

